



INDIAN SCHOOL AL WADI AL KABIR

DEPARTMENT OF MATHEMATICS (2021-2022)

TOPIC: GEOMETRY

WORKSHEET

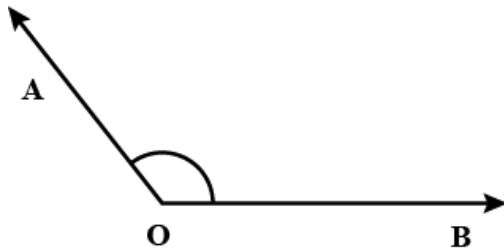
RESOURCE PERSON: MS. BANDANA THAKUR

NAME: _____ CLASS: V SEC: _____ DATE: _____

I. Fill in the blanks with the correct answer.

- 1) A _____ shows an exact location in space.
- 2) An acute angle is greater than _____ but smaller than _____.
- 3) The corner of a book is an example of _____ angle.
- 4) A Line Segment has _____ end points.
- 5) A _____ shows a direction.

II) Observe the picture of the angle given below and answer the questions that follow.



- 1) Name the arms and vertex of the angle.

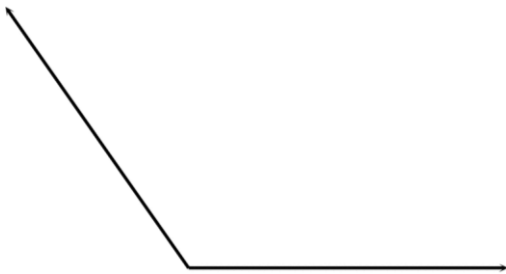
- 2) What type of angle is it?

- 3) How much does it measure?

- 4) Name the angle in two ways.

III) Use a Protractor to measure the angles given below and then identify them as Acute, Obtuse, Right and Straight angle.

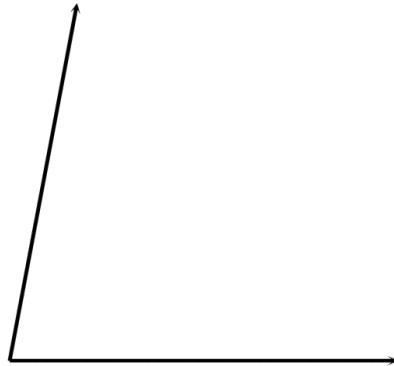
1)



Measurement _____

Type _____

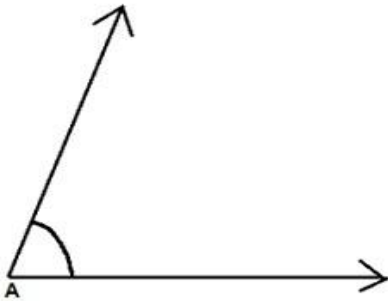
2)



Measurement _____

Type _____

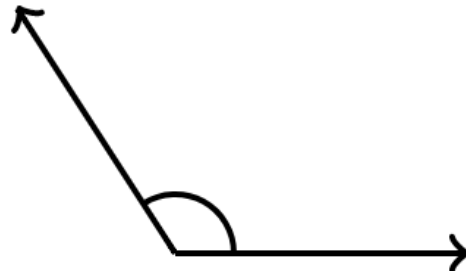
3)



Measurement _____

Type _____

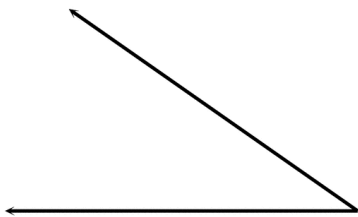
4)



Measurement _____

Type _____

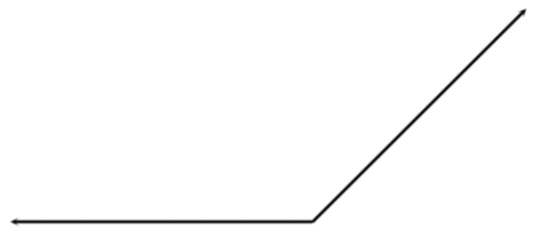
5)



Measurement _____

Type _____

6)



Measurement _____

Type _____

IV. Draw the angles with the following measurements.

60°

105°

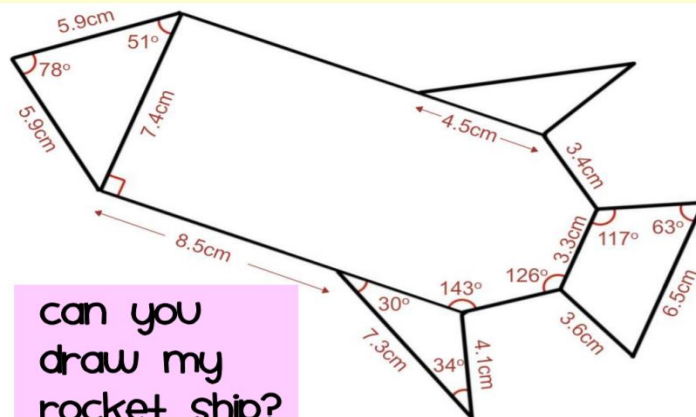
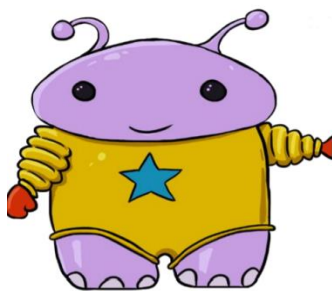
45°

150°

Fun with Geometry

V. Use a ruler, a protractor and a pencil to draw the following. Use the fact that a rocket ship is symmetrical. Colour and you can cut and paste it on a hard paper.

Constructing Lines & Angles Space Rocket Activity



can you
draw my
rocket ship?